

Information sheet | November 2023

Project overview

Beach Energy (Beach) supplies natural gas for the ongoing needs of Victorian homes, business and industry, through production at the Otway Gas Plant near Port Campbell.

The Enterprise Project is one of Beach's activities in the Otway Offshore Basin. The Enterprise well was drilled in 2020, and Beach is now planning the final activities to connect and commission the well, subject to regulatory approvals.

The Enterprise Project includes:

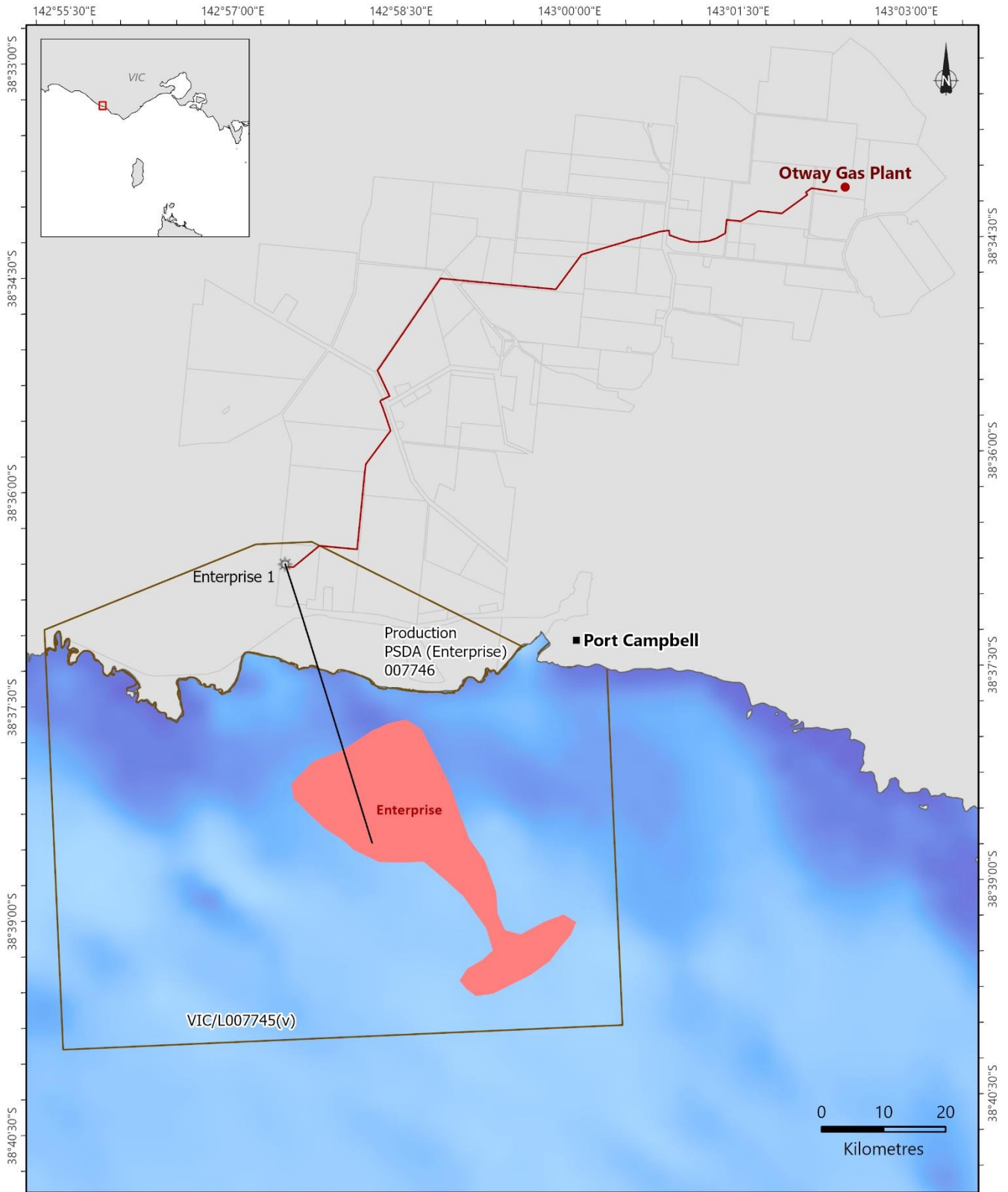
- an offshore natural gas reservoir under the seabed (see map over page)
- a natural gas well that was successfully drilled in 2020 from an onshore wellsite to the offshore gas reservoir
- a wellsite that includes the existing well head, transportable facility buildings and

equipment for flowing the gas to Otway Gas Plant for processing

- a recently constructed pipeline from the wellsite to the Otway Gas Plant.

Beach commenced consulting local community members and other stakeholders in early 2018. The purpose of this information sheet is to provide an update on the project and a further opportunity for consultation ahead of final activities to allow the flowing gas from the well for production, subject to regulatory approvals.

Civil works and preliminary installation activities have been carried out at the wellsite. Beach is now preparing for the final construction activities that will enable the raw gas to flow to the Otway Gas Plant where it will be produced for supply to the east coast gas market.



GDA2020

- Enterprise Pipeline (PL006998) ■ Gas field
- Enterprise Well Path Beach Operated Permit

This map is provided as a general reference only and is not intended to be used for any other purpose. No warranty is provided in relation to the accuracy of the information contained in this map.

OT23-0053

Location and timings

The Enterprise natural gas reservoir is located in the Victorian State offshore petroleum permit VIC/L00745(V) and onshore PSDA007746 (see map). The onshore wellsite is approximately 4 km west of Port Campbell and the well path reaches approximately 2.5 km from the coastline to a depth range of 2.1 to 2.7 km below Mean Sea Level.

Under existing approvals, preliminary activities at the wellsite commenced in early 2023. The remaining installation of equipment is expected to start in early 2024 and be completed by approximately mid-2024. Timings are subject to final regulatory approvals and the delivery of specialised equipment.

This will enable production of gas from the Enterprise well at the Otway Gas Plant to supply the Victorian gas market during the 2024 winter peak demand period.

Construction activities

Construction activities for the Enterprise Project include the installation of equipment to control the flow of the well, monitoring the well and the wellsite.

The well will be connected to the pipeline that runs underground from the Enterprise wellsite to the Otway Gas Plant (see map below) and commissioning testing carried out. The pipeline installation was substantially completed in May 2023 with some minor works remaining that couldn't be completed due to wet weather.

Beach is preparing its final documents for approval of the remaining wellsite construction activities and for the ongoing operations at the wellsite and the offshore well underneath the seabed (see diagram on page 1).

Production operations

After all equipment is installed and the well has been connected to the pipeline, final commissioning works that involve flowing of the gas to the facilities will commence. Upon completion of commissioning, regular operations will commence.

The Enterprise wellsite will operate 24 hours a day, 7 days a week. The wellsite will be monitored and maintained from the Otway Gas Plant Central Control Room, located approximately 8 km north-east of the wellsite. Routine fortnightly inspections of the wellsite will be undertaken during daylight hours.

Ongoing monitoring and maintenance of all wellsite facilities will include:

- routine wellsite surveillance and inspections
- regular weed and vegetation controls
- instrument calibration and testing
- valve and vessel inspection and functional testing
- wellhead servicing and testing
- well integrity monitoring
- pipeline maintenance and integrity management (in accordance with Pipeline Licence PL006998)

Non-routine activities such as well maintenance (if required) may occur during the operational life of the well and will be undertaken by specialist crews.

Environmental regulations and approvals

As the Enterprise Project involves an onshore wellsite, a well path from the wellsite that runs under the Port Campbell National Park to an offshore reservoir, and an underground pipeline from the wellsite to the Otway Gas Plant, there are several applicable acts and regulations including:

- Victorian *Pipelines Act 2005* and associated regulations
- Victorian *Petroleum Act 1998* and associated regulations
- Victorian *Offshore Petroleum and Greenhouse Gas Storage Act 2010*
- Victorian *Planning and Environment Act 1987*
- Victorian *National Parks Act 1940*
- Commonwealth *Native Title Act 1993*

Approvals from the various local, State and Commonwealth regulatory authorities were granted ahead of the exploration phase of the project, construction of the pipeline and preliminary wellsite activities which have all been conducted. To enable the production of gas through the existing well bore Beach has obtained a Section 40 Consent under the *National Parks Act 1940*. The Native Title process has been concluded between the Eastern Maar Native Title Holders, the State of Victoria and Beach.

Further approvals are required for the remaining construction and commissioning activities, and for the ongoing production of gas from the well. Beach is preparing documents for approval including:

- Environment Plan for the flowing of gas from the offshore well path
- Operations Plan that includes an Environment Management Plan (EMP) for the remaining construction activities at the wellsite
- Operations Plan that includes an EMP for the final commissioning activities and the ongoing operations at the wellsite.

Whilst there are slight differences under each piece of relevant legislation, the consistent principle is that the plans must describe the proposed activity, the environment that it is to occur in, identify the potential impacts and risks associated with the activity and measures to ensure that these impacts and risks are managed to as low as reasonably practicable (ALARP).

Under the *Petroleum Regulations 2021*, a *Notice of Operations* for each onshore petroleum activity proposed to be undertaken must be issued by the Titleholder to any person or organisation that may be affected by an activity or has interests that may be affected by an activity carried out under the operation plan. Beach issued a *Notice of Operations* to such persons and organisations for the wellsite construction activities in February 2022 and for wellsite production activities in February 2023.

Beach has updated the *Notice of Operations* for the wellsite operations to reflect updated project timings. The overall scope of activities proposed has not changed. The updated notice can be seen at Engage Beach

Consultation

The Operations and Environment Plans are also required to demonstrate that there has been effective consultation with relevant persons or organisations during development of the plans.

This information sheet has been prepared to inform relevant persons or organisations whose functions, interests or activities may be affected by the activities set out in this information sheet.

Please contact us if you would like further information, would like to raise any concerns regarding the

activities, or to consult with us about how this project may impact you.

Consultation for the construction EMP has been completed. For the ongoing production EP (offshore) and EMP (onshore) this further consultation phase will continue until 20 December 2023, after which the consultation will be summarised and include in the EP & EMP that will then undergo assessment by the [Department of Energy, Environment and Climate Action](#).

After production commences, Beach will carry out ongoing consultation for the wellsite operations as set out in the Operations Plan.

Questions and answers

Will the Otway Gas Plant get bigger?

No. Equipment has been installed at the Otway Gas Plant to receive the gas from the Enterprise 1 well, but the size of the plant will not be increased. Gas from the Enterprise Project will help to replenish diminishing gas reserves from existing fields to allow the continued operation of the plant within its current capacity. This project is one of several other projects included in the development cycle of Beach's Victorian Otway Basin assets.

How does Beach manage environment protection?

The Enterprise wellsite will be operated in accordance with detailed Operations and EMPs that must be receive regulatory approval prior to commencing the different project phases and flowing of gas for production at the Otway Gas Plant. These plans identify potential environmental risks and outline appropriate management measures to reduce and minimise impacts to ALARP.

How will you ensure that you operate safely?

Safety takes precedence in everything we do. Beach has over 60 years' experience in the oil and gas industry and our exploration, development and operations teams have extensive local and international experience. Beach personnel undertake regular competency assessments and training to ensure their knowledge and skills meet strict operational requirements.

In addition to conditions set out in regulatory approvals, all Beach activities, including the Enterprise Project, are undertaken in accordance with the Beach

Energy Operations Excellence Management System (OEMS). The OEMS documents the Health, Safety and Environment (HSE) policy, HSE Standards, HSE Directives and the key HSE processes and requirements for all activities undertaken by Beach Energy.

Why is Beach continuing gas development?

Natural gas from the Otway Basin has been supplying Victoria for decades. Beach holds several permits in the Otway Basin including the Halladale, Black Watch and Speculant fields (Victorian waters) and the Geographe and Thylacine fields (Commonwealth waters). These fields flow raw gas to the Otway Gas Plant for processing and supply to our customers in Australia. Industry and regulators continue to forecast gas shortages in the coming years for south-east Australia. To positively impact declining production from existing fields as reservoirs deplete, new gas projects need to be undertaken.

What's Beach's approach to climate change?

Beach recognises that action to address climate change is necessary and that all energy systems must contribute in order to meet the targets set out in the Paris Agreement.

We have an equity emissions reduction target to reduce our scope 1 and 2 emissions intensity by 35% by 2030. Beach is committed to producing the energy needed for a sustainable transition – one that supports the needs of societies today, and into the future. We aspire to reach net zero Scope 1 and 2 emissions by 2050. See further information in Beach's [Sustainability Report](#).

Is Beach increasing retail gas prices?

No. Beach is a gas wholesaler and supplies the majority of its gas under contract to energy retailers in Australia. Beach does not set retail prices.

Is Beach exporting gas from the Otway Basin?

No. Beach does not export gas from the Otway Basin. The gas processed at the Otway Gas Plant in Victoria is supplied via an existing pipeline to the Australian east coast gas market to meet residential, business and industry demands.

Further information, consultation and submissions

This information sheet has been prepared to inform persons or organisations that may be affected by an activity carried out under the onshore Operation Plan and EMP or has interests that may be affected. For the offshore EP, consultation is undertaken with *Relevant Persons* whose functions, interests or activities may be affected by the activities to be carried out under the EP.

Consultation is an important part of developing EPs and EMPs as its purpose is to ensure that potential impacts have been identified and appropriate measures adopted because of the consultations. Please contact us if you would like further information, have any questions or feedback wish to consult with us.

Submissions

If you would like to make a submission about how you may be affected by the activities to be carried out under the onshore Operations Plan and EMP. Submissions must be made in writing by either email, the [Engage Beach](#) online hub, or post (contacts below) by 21 December 2023. All submissions will be assessed and where appropriate will be addressed in the Production Operation Plan prior to submission for assessment and approval by DEECA.

Consultation will continue until 21 December 2023. Beach will consider all feedback, including any concerns or objections and will explore measures to reduce any impacts and risks.

P: 1800 797011

E: community@beachenergy.com.au

W: engage.beachenergy.com.au

M: Enterprise Wellsite Submission
Senior Manager, Community Relations VIC
Beach Energy
80 Flinders Street
Adelaide SA 5000

beachenergy.com.au

