

Diagram illustrating onshore to offshore directionally drilled Enterprise 1 well (not to scale)

Information sheet | June 2024

Project overview

Beach Energy (Beach) supplies natural gas for the ongoing needs of Victorian homes, business and industry, through production at the Otway Gas Plant near Port Campbell.

The Enterprise Project is one of Beach's activities in the Otway Offshore Basin. The Enterprise well was drilled in 2020 and successfully connected and commissioned in mid-2024. The Enterprise Project allows raw gas to flow to the Otway Gas Plant where it is produced for supply to the Victorian gas market.

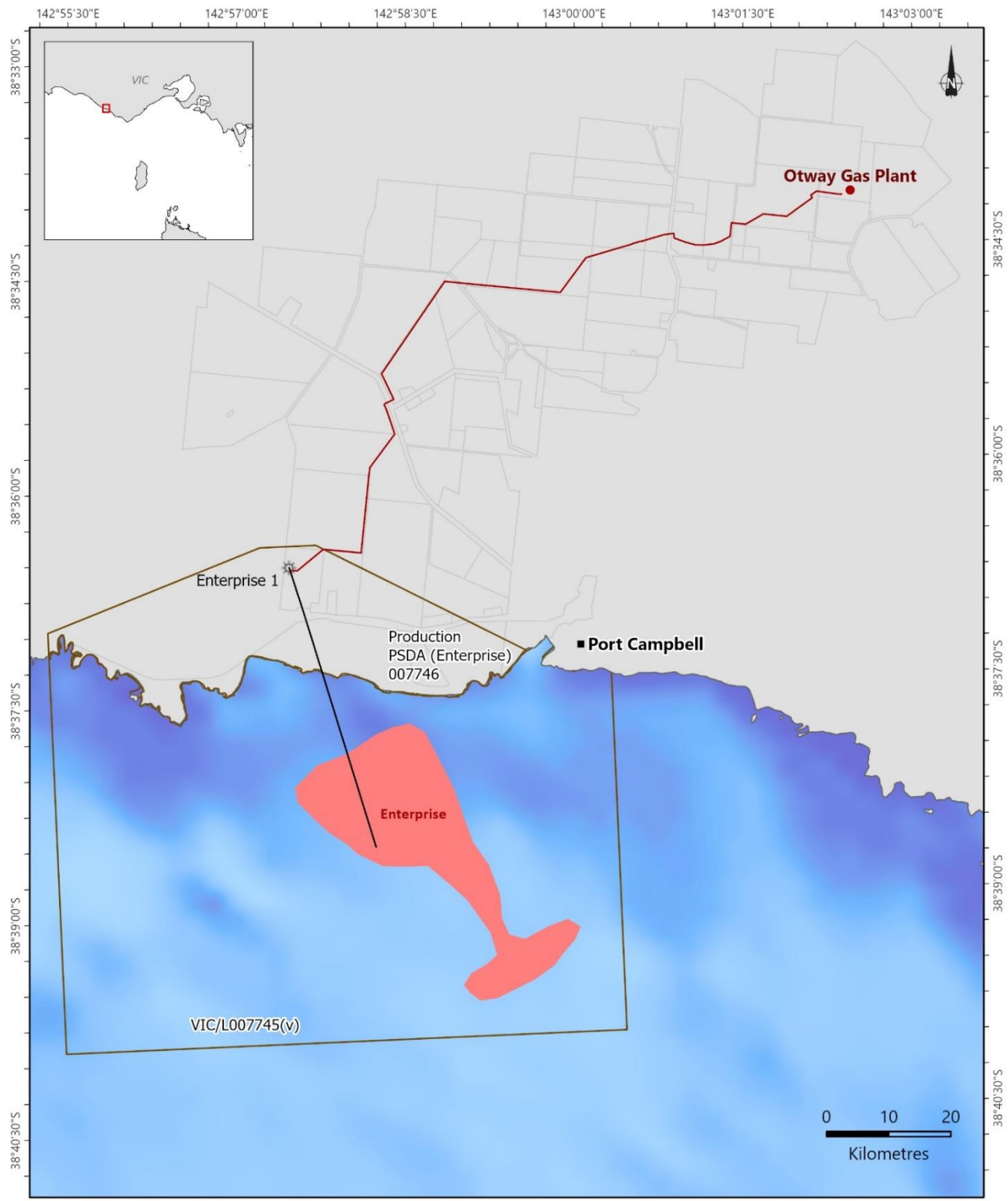
The Enterprise Project includes:

- an offshore natural gas reservoir under the seabed (see map on the next page)

- a natural gas well that was successfully drilled in 2020 from an onshore wellsite to the offshore gas reservoir
- a wellsite that includes the well head, transportable facility buildings and equipment for flowing the gas to the Otway Gas Plant for processing
- a pipeline from the wellsite to the Otway Gas Plant.

Beach has consulted local community members and other stakeholders since early 2018. The purpose of this information sheet is to provide information regarding the project and the ongoing operations.

Activity location map



GDA2020

- Enterprise Pipeline (PL006998)
- Gas field
- Enterprise Well Path
- Beach Operated Permit

This map is provided as a general reference only and is not intended to be used for any other purpose. No warranty is provided in relation to the accuracy of the information contained in this map.

OT23-0053

Project location

The Enterprise natural gas reservoir is located in the Victorian state offshore petroleum permit VIC/L00745(V) and the wellsite is located onshore in PSDA007746 (see map). The wellsite is approximately 4 km west of Port Campbell. The well path reaches approximately 2.5 km from the coastline to a depth range of 2.1 to 2.7 km below Mean Sea Level. The approximately 11 km long pipeline (PL006998) connects the wellsite to Beach's Otway Gas Plant.

Construction and commissioning activities have been completed enabling the production of gas from the Enterprise well at the Otway Gas Plant, which will help supply the Victorian gas market during the 2024 winter peak demand period.

Production operations

The Enterprise wellsite operates 24 hours a day, 7 days a week. The wellsite is monitored and maintained from the Otway Gas Plant Central Control Room, located approximately 8 km north-east of the wellsite. Routine fortnightly inspections of the wellsite are undertaken during daylight hours.

Ongoing monitoring and maintenance activities at the wellsite facilities will include:

- routine wellsite surveillance and inspections
- regular weed and vegetation controls
- instrument calibration and testing
- valve and vessel inspection and functional testing
- wellhead servicing and testing
- well integrity monitoring
- pipeline maintenance and integrity management (in accordance with Pipeline Licence PL006998).

Non-routine activities such as well maintenance (if required) may occur during the operational life of the well and will be undertaken by specialist crews.

Environmental regulations and approvals

As the Enterprise Project involves an onshore wellsite, a well path from the wellsite that runs under the Port Campbell National Park to an offshore reservoir, and an underground pipeline from the wellsite to the

Otway Gas Plant, there are several applicable acts and regulations including:

- Victorian *Pipelines Act 2005* and associated regulations
- Victorian *Petroleum Act 1998* and associated regulations
- Victorian *Offshore Petroleum and Greenhouse Gas Storage Act 2010*
- Victorian *Planning and Environment Act 1987*
- Victorian *National Parks Act 1940*
- Commonwealth *Native Title Act 1993*

Approvals from the various local, State and Commonwealth regulatory authorities have been granted ahead of the commencement of the facilities commissioning and commencement of production of gas. To enable the production of gas through the existing well bore, Beach obtained a Section 40 Consent under the *National Parks Act 1940*.

Beach has undertaken consultation with the Eastern Maar Aboriginal Corporation (EMAC) representatives since the inception of the Enterprise Project and has undertaken cultural heritage assessments for the Enterprise wellsite and pipeline with EMAC representatives and nominated cultural heritage specialist consultants. In November 2023, a Native Title agreement relating to the Enterprise Project was reached between the Eastern Maar Native Title Holders, the State of Victoria and Beach.

To enable the commencement of production of gas, the following documents were approved:

- Environment Plan for the production of gas from the offshore reservoir
- Operations Plan that included an Environmental Management Plan for the final commissioning and the ongoing production operations at the wellsite
- Safety and Environmental Management Plans for the operation of the pipeline (PL006998)

These plans describe the proposed activity, the environment that it is to occur in, and identify the potential impacts and risks associated with the activity and the measures that Beach is implementing to ensure that the impacts and risks are managed to as low as reasonably practicable, known as 'ALARP'.

Consultation

The approved plans required Beach to demonstrate that it undertook effective consultation with relevant persons or organisations during the development of the plans. They also outlined Beach's commitment to ongoing consultation with stakeholders throughout the life of the production operations.

Supporting the community

Beach strives to build acceptance, trust and respect in the communities in which it operates through genuine engagement and social performance outcomes.

For more information on Beach's community partnerships, visit beachenergy.com.au/sustainability-2/community-partnerships.

Operating safely

Safety takes precedence in everything Beach does. Beach has over 60 years' experience in the oil and gas industry and its exploration, development and operations teams have extensive local and international experience. Beach personnel undertake regular competency assessments and training to ensure their knowledge and skills meet strict operational requirements.

In addition to conditions set out in regulatory approvals, all Beach activities, including the Enterprise Project, are undertaken in accordance with the Beach Energy Operations Excellence Management System (OEMS). The OEMS documents the Health, Safety and Environment (HSE) policy, HSE Standards, HSE Directives and the key HSE processes and requirements for all activities undertaken by Beach Energy.

Further information

This information sheet has been prepared to inform and update relevant persons or organisations about the Enterprise Project and its ongoing production operations in accordance with Beach's commitment to ongoing consultation.

P: 1800 797 011

E: community@beachenergy.com.au

W: engage.beachenergy.com.au

beachenergy.com.au

